

PF20NM

# ondrives

Precision Gears

## Worm Gear Reducers

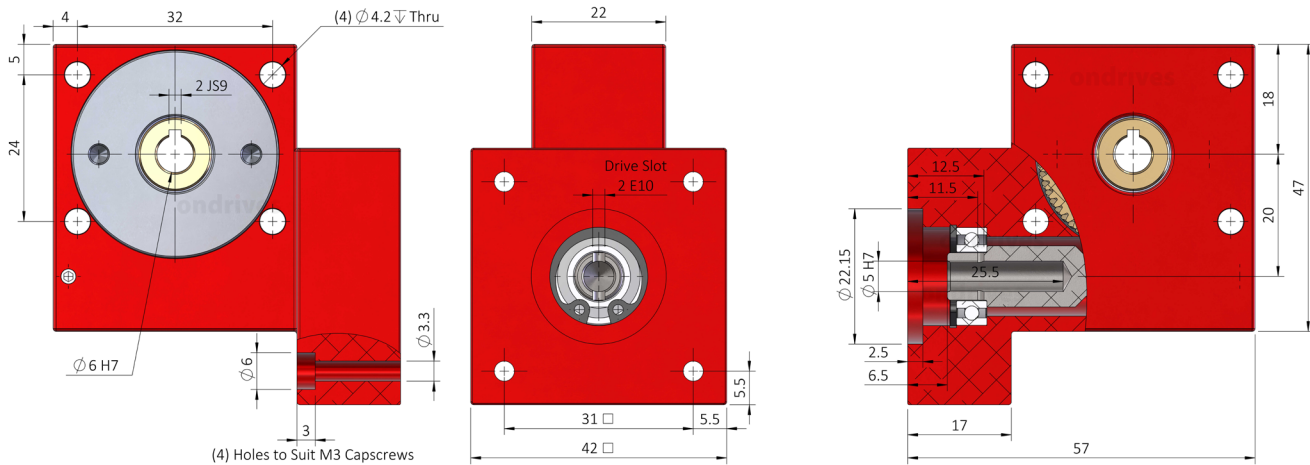
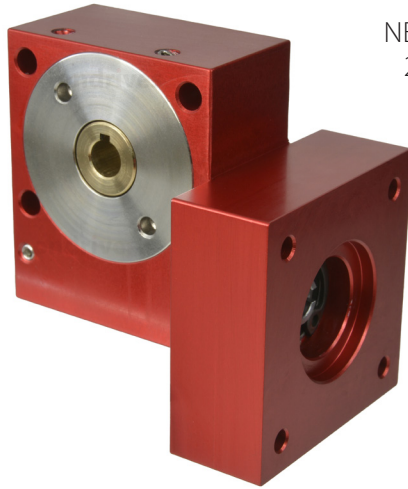
NEMA 17 Flange Input • 5mm Input Bore • 6mm Output Bore  
20mm Centre Distance •  $T_{2max}$  3Nm – 5Nm **10:1 - 120:1**

**Worm Gear Rotation Direction.**

**RH-Right Hand**

When input rotation is clockwise, output gear is pulled towards input.

When input is counter-clockwise, output gear is pushed away from input.



Output Backlash j	PFart Numbers	Output Backlash j AR	Gear Ratio i	Efficiency $\eta$	Lead Direction	Reflected Inertia at InPFut $kg \cdot m^2$
$\leq 0.50^\circ$		$\leq 0.066^\circ$		<b>n1 nom</b>		
	$\leq 0.13^\circ$					
PF20-10NM	PF20-10ANM	PF20-10ARNM	10:1	86%	Right Hand	$2.53 \times 10^{-7}$
PF20-12NM	PF20-12ANM	PF20-12ARNM	12:1	85%	Right Hand	$2.43 \times 10^{-7}$
PF20-15NM	PF20-15ANM	PF20-15ARNM	15:1	84%	Right Hand	$2.35 \times 10^{-7}$
PF20-20NM	PF20-20ANM	PF20-20ARNM	20:1	78%	Right Hand	$2.28 \times 10^{-7}$
PF20-30NM	PF20-30ANM	PF20-30ARNM	30:1	71%	Right Hand	$2.24 \times 10^{-7}$
PF20-60NM	PF20-60ANM	PF20-60ARNM	60:1	60%	Right Hand	$2.21 \times 10^{-7}$
PF20-120NM	PF20-120ANM	PF20-120ARNM	120:1	32%	Right Hand	$2.00 \times 10^{-7}$

**Weight:** 0.23 kg.

**Nom. Input Speed [S1 T<sub>2</sub>] n<sub>1nom</sub>:** 1,000 min<sup>-1</sup> (r/min)

**Max. Input Speed n<sub>1max</sub>:** 3,000 min<sup>-1</sup> (r/min)

**Lubrication:** Grease Shell Gadus S5 V4P 2.5

**Lubrication Temperature:** Max. Operating  $\approx 60^\circ C$

**Max. Output Radial Load F<sub>r2</sub>:** 120N.

**Max. Output Axial Load F<sub>a2</sub>:** 50N.

Testing in your application is necessary.

You will need to assess duty cycles and confirm suitability with your own calculations.

Figures listed are for guidance only.

Cooling may be needed dependent on application.

# ondrives

Precision Gears

T: +44 1246 455500

sales@ondrives.com www.ondrives.com

Updated March 2024 subject to change for use as a guide only.

Worm Gear Reducers

### Worm Gear Reducers

NEMA 17 Flange Input • 5mm Input Bore • 6mm Output Bore  
20mm Centre Distance •  $T_{2max}$  3Nm – 5Nm **10:1 - 120:1**

P Series Wormwheel Gearboxes

